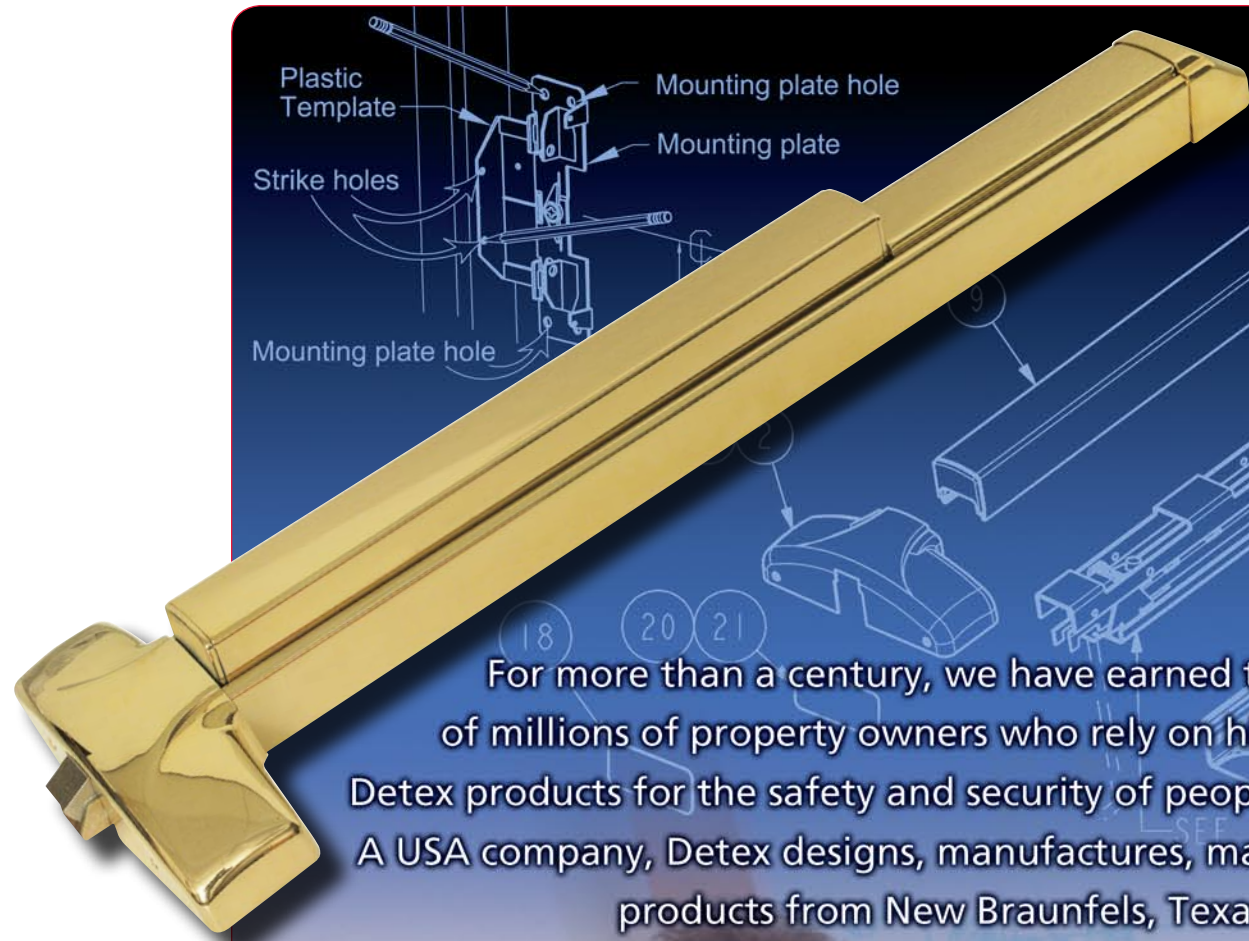


*Detex Works Here.*



## Life Safety and Security Door Hardware

*Where Trust is Built™*  
**DETEX®**  
*Life Safety and Security Door Hardware*



For more than a century, we have earned the trust of millions of property owners who rely on high-quality Detex products for the safety and security of people and property. A USA company, Detex designs, manufactures, markets and ships products from New Braunfels, Texas.



## Where Trust Is Built

Precisely engineered and manufactured to the highest quality standards, Detex Life Safety and Security Door hardware is made to deliver reliable, trouble-free performance.

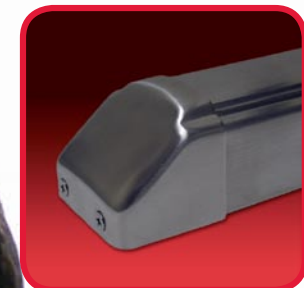
### Designed for high use, high abuse

Often called best in class, Detex exit devices are the first choice for architects, locksmiths, maintenance supervisors, contractors, and for everyone who needs hardware that's easiest to install and requires only minimal maintenance. Made to withstand high use and high abuse, it's the hardware you can count on to perform.

### More electrified options

With more electrified and innovative options, the Detex line is so complete that you can select the exact hardware you want and buy only what you need.

At Detex, we promise excellence in our products and in our customer service, and we deliver. Whatever your life safety and security challenges, trust Detex.



INCLUDED IN  
HARDWARE KIT



## The premium exit device with clear advantages: **ADVANTEX**

Offering maximum style, quality and reliability, our rugged Advantex delivers on its promises. Engineered for safe exit and secure entry in high traffic locations like hospitals, schools, airports, restaurants and office buildings, Advantex is ideal for highly visible doors and entries that call for super heavy-duty hardware.

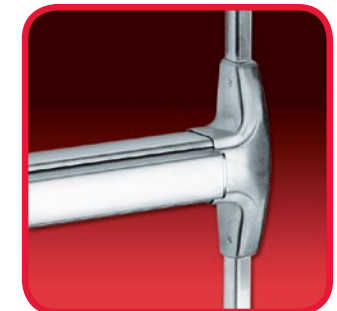
### Complete range of products

Our greatly expanded Advantex line offers a comprehensive selection of products that reflect our dialogue with customers and installers. Among our latest Advantex introductions: new electrified options that give you the power to integrate life safety and security hardware with electrified exit devices ranging from delayed egress to remote monitoring. And beautiful finishes including seven vapor-deposition (PVD) and a variety of economical aluminum finishes.

### Trouble-free operation

With our patented mounting plate and strike locator system, Advantex hardware is the easiest to install, and its heavy-duty construction ensures trouble-free operation in tough daily use.

- Aluminum chassis with full, consistent finish wrap
- Wide range of products for virtually every application
- Fast, accurate installation with installer-friendly mounting plate system
- Available in rim, surface vertical rod and mortise exit devices
- Bottom bolt uses aligning latch system for doors up to +/- 3/8-inch misalignment
- Rods use flat strike, even for fire devices
- Break-away lever in both locked and unlocked modes
- Pushpad has no hooking points
- Easy cylinder service without removing device from door
- Cylinder dogging available with alarmed devices (non-fire)
- Sloped end cap with three interlocking tabs keeps it engaged in device housing
- End cap deflects carts
- More electrified options: exit alarm, electric integration, electric dogging, electric latch retraction, delayed egress, delayed egress magnetic lock, various switching and signaling options
- Electric latch retraction uses quiet motor that quickly retracts latch and touchpad exceeds Life Safety, ADA, CA Title 19, and BHMA Grade 1 requirements



### Detex redefines the exit device: EExER

Our new EExER model incorporates two features—delayed egress and latch retraction—in a single device for exit and entrance control. Through breakthrough design, this device simplifies a complex security application and eliminates other electrified products, such as electric unlocking trim, electric strike and external magnet. Since our exit device is already the easiest to install, adding this new dual-purpose option keeps the entire installation process as simple as possible.

## The superior, cost-effective option: **VALUE SERIES**® Panic Hardware



When you need quality door hardware that's easier on your budget, our Value Series products offer everything you expect from Detex—precise engineering, reliability and options for every application from employee exits to weather-exposed gates.

Priced to be an economical option in durable life safety and security hardware, Value Series exit devices offer many of the same benefits as Advantex, including electrified options. Installation is simple, maintenance is easy, and the look is compatible with aluminum storefront systems and architectural doors.

### Great features, great value

This popular line offers the performance you want at a price that helps your bottom line.

- Same great engineering, design and assembly as Advantex
- Simple installation with installer-friendly mounting plate system
- High-impact ABS and anodized surfaces
- Designed for use on all types of single and double doors with mullions
- Weatherized options for outdoor use
- Easy cylinder service without removing device from door
- Cylinder dogging available with alarmed devices (non-fire)
- Pushpad has no hooking points
- Sloped end cap with three interlocking tabs keeps it engaged in device housing
- Vertical rods use deadlocking simple bottom bolts with no intricate parts to collect debris
- Bottom bolt uses aligning latch system for doors with up to +/- 3/8-inch misalignment
- Rods use flat strike, even for fire devices
- More electrified options: exit alarm, electric integration, electric dogging, electric latch retraction, delayed egress, delayed egress magnetic lock, various switching and signaling options
- Electric latch retraction uses quiet motor that quickly retracts latch and touchpad
- Exceeds Life Safety, ADA, CA Title 19, and BHMA Grade 1 requirements



## Easy to install, long-lasting: **A019 SERIES™** Automatic Operated Door System



### Reliable, safe and convenient access is at hand with the **A019 Automatic Operated Door system.**

A workhorse on the job, the A019 features a super heavy duty, direct drive motor that can operate light or heavy doors in low energy applications. It also offers the ease of one-box installation. The system's door opener controls are mounted and pre-wired in one unit, so it's simple to install, wire and service.

For the handicapped, elderly—or for parents with baby strollers and arms filled with packages—the A019 Series is on duty to help. It's the right choice for stores, airports, libraries, hospitals, or anywhere that complete access is required.

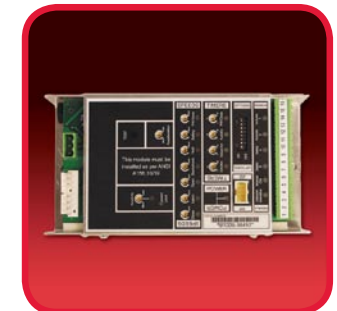
- Adjustable time delay
- Available in EasyKit™ with integrated electric latch retraction
- Adjustments to open/check speeds
- Reverse on obstruction
- Motor protection circuit
- Power assist close
- Delayed activation
- Secondary activation

### Options and accessories

- Clear or dark bronze finishes
- Wireless ADA buttons

### Codes and standards compliance

- BHMA A156.19
- ETL – 3 hour fire rated
- ADA
- Conforms to ANSI/UL Standard 325-2006
- Certified to CAN/CSA 247-92



## Tough duty: 230 Series Exit Control Locks



**EMERGENCY EXIT ONLY**  
PUSH HERE  
ALARM WILL SOUND

A good choice for secondary exits requiring heavy duty security and panic hardware, our 230 Series exit control locks provide time-tested durability to help you reduce employee and customer theft. Our rugged deadbolt panic devices are highly resistant to assault from inside and withstand more than 2,200 pounds of pull force from outside.

Easy to install, they make door security simple for building personnel. The battery-powered, 100-decibel alarm is armed or disarmed by locking and unlocking the deadbolt. Resetting the alarm is accomplished with a control key.

For emergency situations, operation is straightforward so that everyone understands. A steel plate with a photo-luminescent instruction sign in English is available in other languages for special situations.

- Code compliant
- 100-decibel, battery-powered alarm
- Saw-resistant, corrosion-resistant
- Optional multi-point lock
- Black or gray finish
- Available in ECL-230D, ECL-230D-PH (for 36" doors) and ECL-600 (fire-rated)

**EMERGENCY EXIT ONLY**  
PUSH HERE - ALARM WILL SOUND



## The sound of security: **EAX**® Series Exit Alarms



**TO ACTIVATE TIMED BY-PASS:**  
1) Rotate key counterclockwise (CCW), light bar meter flashes, then release key.  
2) To add By-Pass time, press "ACTIVATE TIMED BY-PASS" button. Light bar meter illuminates gradually as more By-Pass time is added.  
3) Release button. Single green LED turns ON indicating By-Pass time is set.  
4) Remove key and prop open door.  
**NOTE:** Alarm automatically arms and resets if door closes before time expires.

**TO ADD ADDITIONAL BY-PASS TIME:**  
1) Insert key and rotate CCW until green LED turns off. Release key.  
2) Press "ACTIVATE TIMED BY-PASS" button. Light bar meter illuminates gradually as more By-Pass time is added.  
**NOTE:** If By-Pass time expires while door is open, alarm will sound.  
**TO SILENCE ALARM:** Close door, insert and rotate key CCW.

Designed for secured door applications that require either a 9 VDC battery-powered or external AC/DC-powered alarmed exit device, our EAX alarms emit a warning that can't be missed.

When unauthorized use of a secured door occurs, these devices will make sure you hear it—a piezo horn generates approximately 100 decibels. The alarm can be silenced only by a proper control key.

Easy to install using ordinary tools, Detex exit alarms are available to fit your particular door application. The EAX-411, for example, sounds an alarm when the door is propped open longer than a preset interval (0-60 seconds).

- Upgraded features are field-selectable at no additional cost
- Battery or external power operation
- Surface or flush-mount styles
- Gray or black finish
- Available in weatherized finishes
- Tamper-resistant housing
- Automatic handing
- Self adjusting cam assembly



## Mission control: *Series 800* Universal Controllers and Power Supplies

Here is the gear that gives you total control over all electrified door hardware on your premises: Detex Series 800 controllers and power supplies that provide connections for local or remote signaling in one box. From the 10-800 controller that provides at least 2 amps of DC power at the door, to models that require a low voltage power source, we offer a complete choice of configurations designed to make door operation run smoothly.

For two doors, one door, or several doors, for flush mounts or surface boxes—whatever you need, you'll find the controller and power supply you want in our lineup.

- Input voltage status LED
- Output voltage 24VDC regulated
- Fire alarm relay
- Thermal fuse protected for auto resetting of circuits
- Transformer fuse protection

## Easy off, easy on: Detex Mullions

Durable, low-cost Detex mullions are designed for use with rim exit devices on standard and fire-rated pairs of doors. The unique patented latching head design allows the mullion to be removed in seconds with one key turn, and then to be snapped back into place without using the key.

Made to be user friendly, our mullions are easily adapted to any double-door application and are easily installed as retrofits.

- Designed for heavy use
- Simple installation with no drilling
- Cylinder located inside building to prevent tampering
- Primer gray coating for easy field painting



## How Detex Works For You

With a history dating from the 1870s, Detex has evolved to encompass a complete line of hardware for exit and entry control in industrial, commercial, institutional and educational buildings. Today, Detex is known worldwide for leadership in life safety and security door hardware, loss prevention and architectural hardware, integrated door security systems and guard tour verification.

Our goal has always been to protect people, secure property, and assure the life safety and security objectives of our customers. From our long experience, we have learned that value from high-quality products that stand the tests of time and use. And from products that you can always count on to perform under pressure.

We know you will be satisfied by the performance of these Life Safety and Security Door Hardware products, and we invite your questions about your specific applications.





Detex Corporation  
302 Detex Drive  
New Braunfels, TX 78130  
800-729-3839  
830-629-2900  
830-620-6711 (fax)

[www.detex.com](http://www.detex.com)  
[marketing@detex.com](mailto:marketing@detex.com)